

Use Data to Create and Sustain a College-Going Culture

Laura Conklin
 School Counselor, M.Ed, NBCT
lconklin@mmk.wednet.edu

What is Your **Essential Purpose** as
a Counselor? What are your
Guiding Principles?

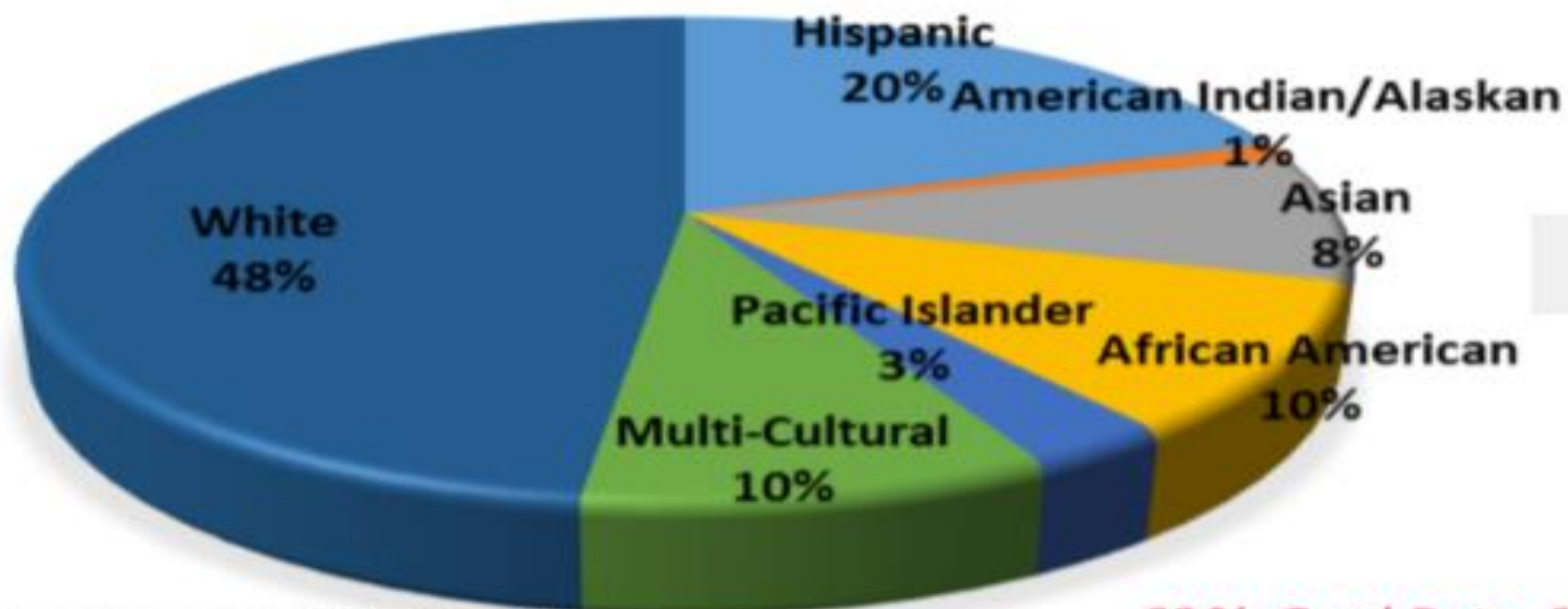


- What DRIVES you every day?
- What are you willing to do?





FRANKLIN PIERCE HIGH SCHOOL



70% Free/Reduced Lunch District-wide
High Mobility
High Number of 1st Generation Students

62% Grad Rate, 2009

- Advisory in place
- K-12 "Counseling Curriculum"
- Missing:
 - Data-Driven Intentionality
 - Standards
 - Evaluation
 - Structure to evaluate effectiveness

62% Grad Rate, 2009

- Advisory in place
- K-12 "Counseling Curriculum"
- Missing:
 - Data-Driven **Intentionality**
 - Standards
 - Evaluation
 - Structure to evaluate effectiveness



Mary M. Knight Matlock, WA

Demographics

- K-12 School
- Rural Washington, no Industry
- 100% Free/Reduced
- 95% First Generation College

School Counseling Program Prior to 2016

- No School Counselor
- No College/Career Program
- Limited Data-Driven Decision Making
- 5% Attend Post-Secondary Education





Vision Statement



"Students at Franklin Pierce/Mary M. Knight Schools will graduate with skills necessary for College and Career Readiness..."

Counseling Standards

- * Academic/Learning
- * Life/Career Planning
- * Social/Emotional
- * Multicultural/Global Citizenship

Counselor(s): Advocate, Leader, Collaborator

Build a **CULTURE of College/Career Readiness:**

- **School-wide programs** that support Vision and Goals.
- **Structure/analysis** to drive prevention/ intervention and evaluate effectiveness.



Leadership

Advocacy

Collaboration

Franklin Pierce High School/Mary M. Knight

Annual Goals

- Supports Vision
- Increase College/Career Readiness
- Data-Driven

- < >
- | | |
|--|--|
| ✓ Increase Attendance for 11th Grade Hispanic Females by 5%. | ✓ Implement 7th-12th College/Career Sequence |
| ✓ Increase Dual Credit Enrollment by 15%. | ✓ 100% 7th-12th Graders with High School Beyond Plan |
| ✓ Decrease Suspensions/ODR by 20%. | ✓ 100% Seniors complete FAFSA |
| ✓ Maintain Graduation Rates of 90%+. | ✓ Increase Graduation Rates to 90%+ |

College and Career Readiness

School-Wide Programs

Advisory: Counseling Curriculum

- Learner
 - Planner
 - Citizen
- }
- Kindergarten-Senior Year
 - Vertically Aligned
 - Developmentally Appropriate

All Stakeholders Involved!

- **Students:** Portfolio Completion
- **Teachers:** Advisors
- **Counselors:** Leadership/Advisors
- **Admin:** Support through Structure
- **Parents:** Student-Led Conferences
- **Community:** Senior Panels, Career Day



7th & 8th Grade

Exploration and Self-Discovery

- SMART Goals
- Career Exploration
- Interest Assessments
- Habits for Success
- Decision Making
- Growth Mindset
- College Planning Visit
- Personalized Pathway
- Relationship Building

Additionally:

- Link Crew Mentorship
- Elementary Connectedness
- 7th Period Academic Intervention
- School-Wide Supports



9th & 10th Grade

Focus: Self & Post Secondary
Exploration

Advisory

- Interest Assessments
- Career Clusters
- Learning Style Inventory
- Employability Skills
- High School & Beyond Plan
- Post-Secondary Site Visit: 10th Grade
- Link Crew Mentors assigned 9th advisory



Additionally...

- **AVID** 9th/10th classes
- All 9th/10th take PSAT
 - Advisory lesson on interpreting PSAT
 - AP Potential to all Pre-AP/AP teachers
- AP Intervention/Club
- Required Stem Elective for 9th
- College and Career Night
- Student-Led Conferences (K-12)
- Post-Secondary Awareness Month: March
 - **March Madness!**
- Half Cap Ceremony: 10th Grade

RIGOR AND RELEVANCE

Math Placement

Intensified Algebra

- Aims Web < 15th percentile
- SBA: Level 1: <2446

Algebra Title + Learning Lab

- Aims Web 16-25th percentile
- SBA: Level 1: 2447-2478 or Level 2 + Failed Pre-Algebra 1st semester

Algebra + Learning Lab

- Aims Web: 25th-35th percentile
- SBA: Level 2: <2521, Pass Pre-Algebra

Algebra

- SBA: Level 2-3
- Pass Pre-Algebra

Pre-AP Geometry

- SBA: Level 3+
- Pass Algebra

Pre-AP Algebra 3/4

- SBA: Level 3-4
- Pass Geometry

Based on 7th Grade SBA Scores

English Placement

Literacy Lab + English Title

- Aims Web < 20th percentile
- SBA: Level 1 (<2478)

English Title

- Aims Web 20th+ percentile
- SBA: Level 1 or 2 (IF failed Humanities 1st semester)

English

- SBA: 2-3 (Level 3: \leq 50th percentile: 2479-2571)
- Passed Humanities 1st semester

Pre-AP English

- SBA: 3-4 (Level 3: \geq 51st percentile: 2572+)
- Passed Humanities 1st semester

Science Placement

Biology

- Science: \leq 400 MSP
- SBA Math: Level 1-3 (low)

Pre-AP POLS

- Science MSP: Level 3
- SBA Math: Level 3-4 (high 3)
- Science 08: A-B Grade, Tier 1: Attendance

All 9th/10th New Enrollments: Aims Web tested

11th & 12th Grade

Focus: Planning & Launching Plan

Advisory

- ASVAB
- PSAT
- Post-Secondary Research
- Employability Skills
- Financial Budget
- Job Shadows
 - Tied to Career Clusters
- Volunteer Work in the Community
- High School and Beyond Plan
- Student-Led Conference
- Senior Presentations
 - Community Panels
- Mock Presentations to Juniors

Additionally...

- College and Career Night
- College Goal Night
- Financial Aid Night
- FAFSA Completion Night
- Senior Meetings
- Post-Secondary Acceptance Posters
- Grad Walk: Seniors visit Elementary Schools day before graduation



MTSS: Multi-Tiered System of Supports



- Data is a source of communication.
- Data should DRIVE decisions.

FP Goal: Increased Dual/Credit Enrollment & Supports

Articulated Credit

- Tech Prep Courses

College Course Completion

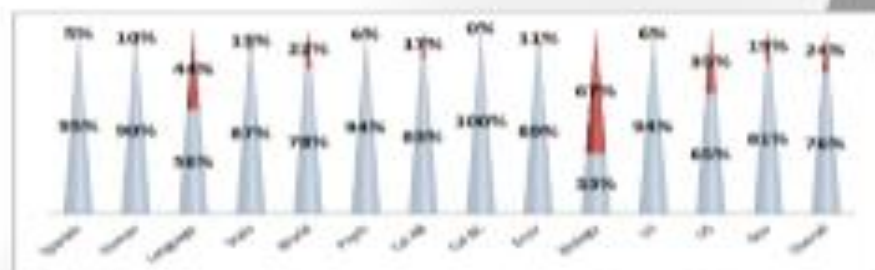
- Running Start
 - Increase 200%
- College in the High School
 - New: Pre-AP Pre Cal

Credit by Exam

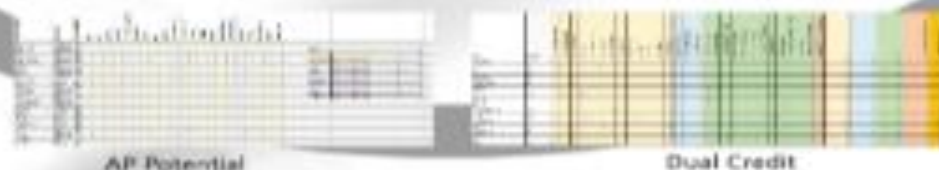
AP Courses

Supports:

- AP Club
- AP Intervention
- AP Meeting
- AP Potential: Registration



November 2014



FP Goal: Decrease ODR/ Suspensions by 20%.

The Big Picture



Actions

Tier 1

- Placement
- Freshman Academy
- Sophomore Action Team
- CHAMPS
- SIOP

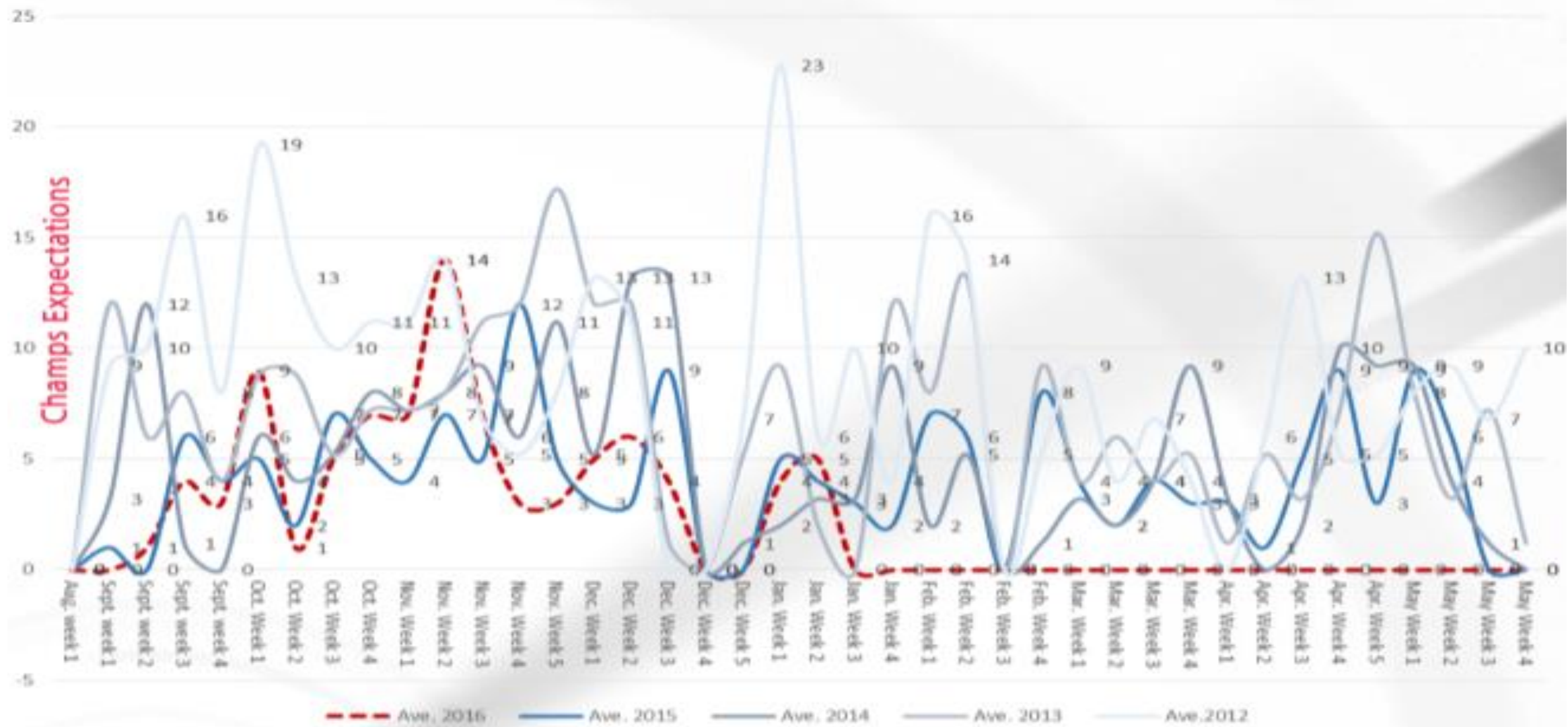
Tier 2

- Why Try
- Classroom Lessons
 - HIB
 - Communication
 - Self Advocacy
- Restorative Justice

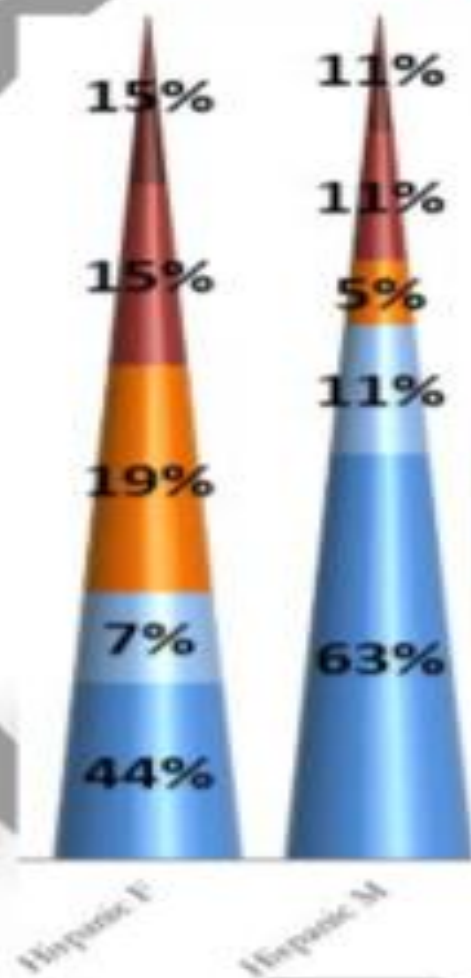
Tier 3

- Teacher/Parent Conference
- Restorative Justice
- In School Discipline

Number of Suspensions Per Week - 2015



FP Goal: Increase Attendance for 11th Grade Hispanic Females by 5%.



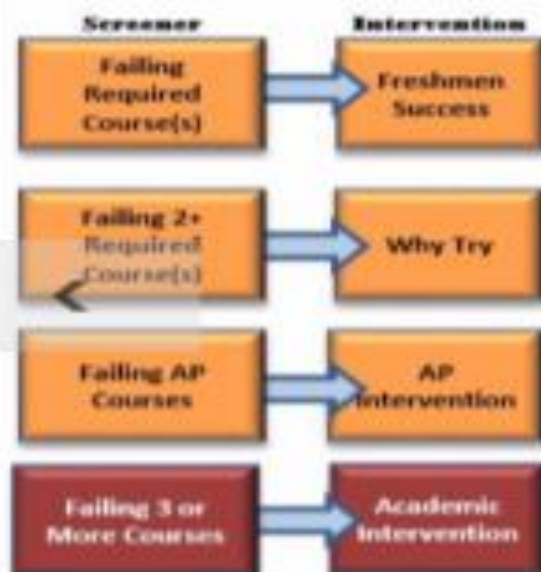
Hispanic female attendance has decreased, 15% (10th-11th grade). Failure rates increased (same demographic):

- AVID
- LEAP: Latino Educational Achievement Project targeting Hispanic females.
- Link Crew: Mentorship
 - Identify Hispanic leaders to be LC mentors.
 - Use LC mentors from FPHS at the middle school level with AVID Hispanic students.
- Attendance Interventions: Resiliency and mentorship with Tier 2 and 3.
- Family/Community Outreach: Middle and elementary parent nights.
- AP Spanish students: Translate during parent meetings to engage families.

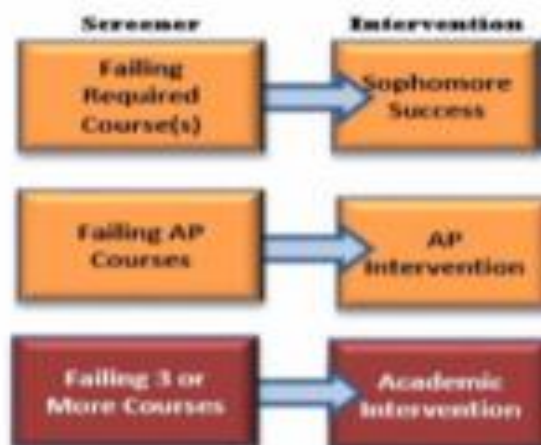
What We Do to Ensure Student Success



Freshmen



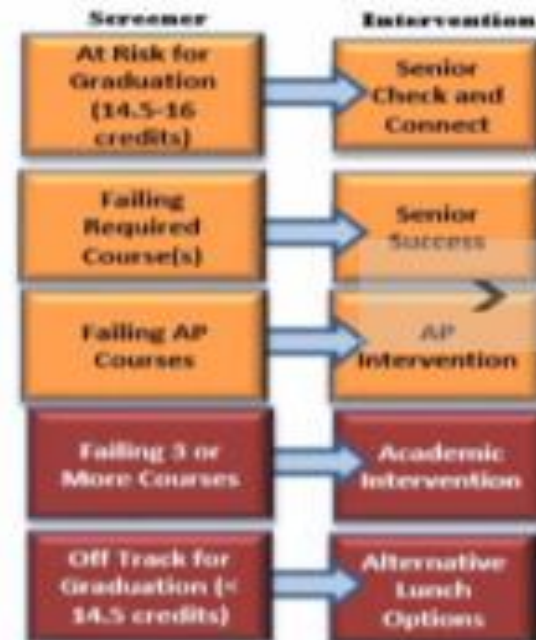
Sophomores



Juniors



Seniors



Tier 3:
Targeted Individuals

Tier 2:
Targeted Groups

Tier 1: School-Wide

Additionally:

- Staffing: Tier 3 intervention, Counselors may arrange a Staffing for students who continually fail 3+ classes (9th-12th grade).
- Guided Learning: Students failing 1+, below 3.0

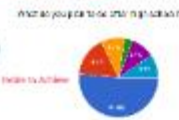
Franklin Pierce
High School
Response to Intervention

MMK Data-Driven Goals



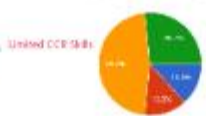
28

29. Know how you plan to pay for (financed) college:



30

30. Know how you plan to pay for (financed) college:

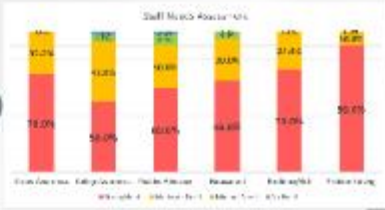


31

31. Know your biggest concern for students at Maryland Heights College:



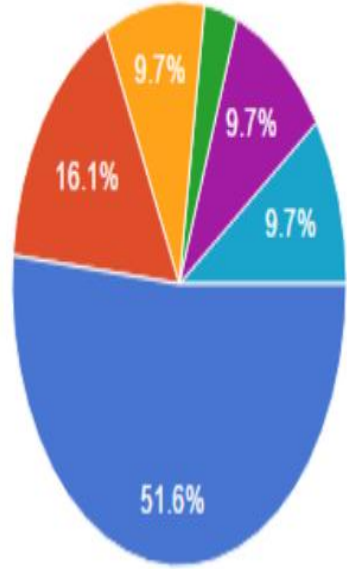
32



MMK
Maryland Heights College
1700 Maryland Road, Suite 1071
1155 Parkview Drive, Suite 1071
1155 Parkview Drive, Suite 1071
1155 Parkview Drive, Suite 1071

What do you plan to do after high school?

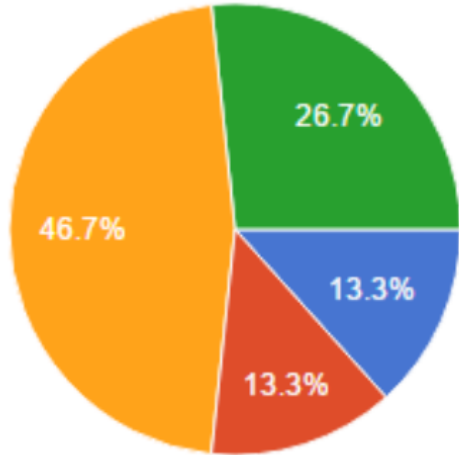
Desire to Achieve



- 4-year college/university.
- Community college/2-year college.
- Technical/vocational college.
- Apprenticeship program/internship.
- Military.
- Get a job.

I know how I'll pay for (finance) college.

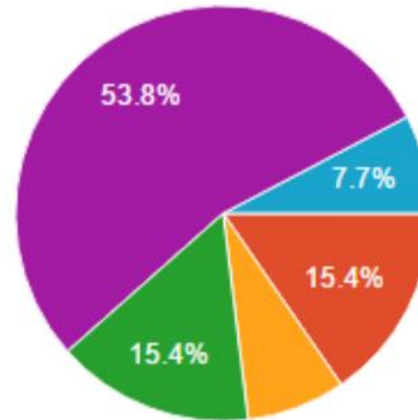
Limited CCR Skills



- Strongly Agree
- Agree
- Disagree
- Strongly Disagree

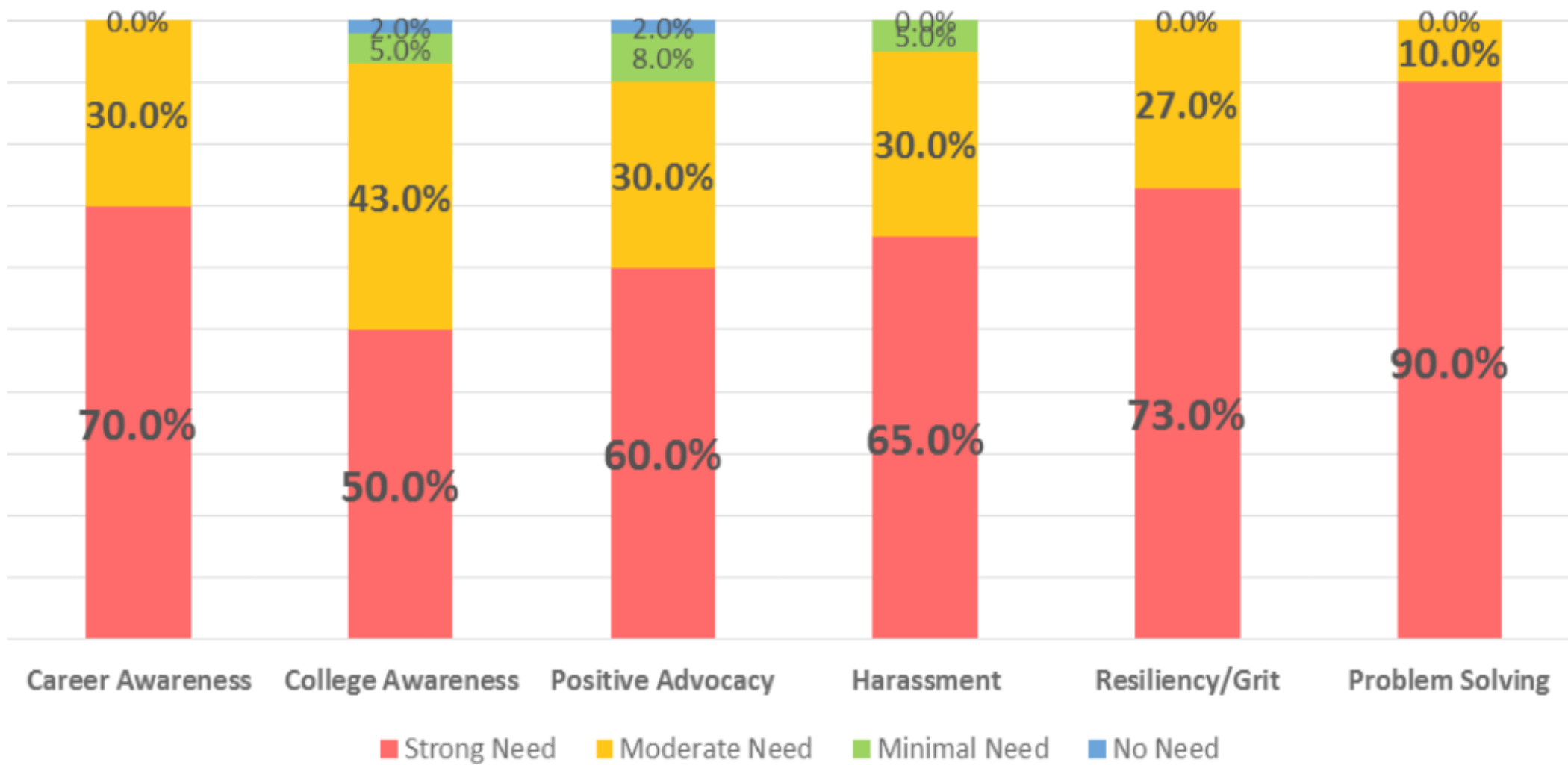
What is your biggest concern for students at Mary M. Knight? Choose one.

Struggle with Apathy = Struggle with Resiliency



- Alcohol, tobacco or drug use.
- Harassment or bullying.
- Violence
- Discrimination
- Apathy (not caring)
- Other

Staff Needs Assessment



Leadership

- District MTSS Team
- District Navigation Team
- District Team/Crisis Team
- Building Leadership Teams

Advocacy

- WSCA Presenter 2016
- ASCA Presenters 2012, 2014, 2016
- ACTE Presenters 2010, 2013
- OSPI Grad Summit
- Hosts to Numerous District Counseling Teams

Collaboration

- District Community, Family Support Team
- District Counseling Team
- WSCA Leadership

Results



- Grad Rates: 93%, Improved 30% in 6 years.
- 100% High School Beyond Plan Completion
- STEM Lighthouse School
- Increased AP Participation 150%
- School of Distinction
- Career Guidance in Excellence Award
- 1st Recognized ASCA Model Program (RAMP) in Washington state!

